

LAST CHANCE

CALL FOR ENTRIES

International Juried Exhibition

The deadline for entering our International Juried Exhibition is

Tuesday, March 15th

We hope a whole bunch of you are working on your paintings right now, so you can enter them in our showcase event of the year. If you've never tried to enter a show before, we know it can be a little scary to actually submit your artwork into an exhibition. We really want to encourage you to give it a try. We all have that anxiety at first, but it definitely gets easier each time you give it a try. Why not give it a try in one of our own events?

All entries will be submitted through the Call For Entries (CaFE) website. The deadline is at midnight on the 15th. If you need a link to enter the exhibition on the CaFE website, click [HERE](#).

And if you need any assistance entering your painting, please send us an e-mail at swaexhibitions@gmail.com (Just don't wait until right before midnight on the 15th!)

Artists will be notified if they were accepted into the exhibition on March 25th.

SWA's very own Laurin McCracken is the juror for this show. Laurin will make his final decisions on awards once the paintings are hung in the Fort Worth Central Library's Atrium Gallery.

Inside This Issue

*Call For Entries –
2022 International Juried
Exhibition*

Next Meeting Information

Announcements

Member's News

Welcome to New Members

Fundraiser Info

2022 Calendar

SWA Information Station



Follow Us!



Monday, March 21ST

7:00pm

UNT Health Science Center



MARCH

Demo Artists ★ ★ ★

Ann Winchester & Bill Dale



SWA Members Ann Winchester & Bill Dale are going to team up for an exciting demo at our next meeting!

Ann Winchester is a commission portrait artist and innovative art coach.

Best known for her portraits, Ann has an innate ability to capture skin tones and the vibrancy of her subjects. She also paints animals, landscapes and still life.

Her inquisitive mind is constantly seeking out innovative ways to express her art and to teach others how to tap into their own artistic abilities. She loves to learn and generously shares what she learns with her art students in both classes in Arlington and Cleburne.

Bill Dale began his career in Industrial Design after graduating from the University of Kansas. He took his eye for design and began painting landscapes/cityscapes subjects, eventually moving into figurative work and portraits. Bill says he continues to work to learn more about techniques, paints and materials. As his skills continue to develop, he started doing demos & workshop for local art groups.

**REMEMBER
WE ARE MEETING
IN PERSON AGAIN!**

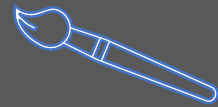
Join us at the UNT Health Science Center
3500 Camp Bowie Blvd. Fort Worth

**Masks are not required
to attend one of our meetings.**

There is plenty of room to spread out to encourage social distancing. We want everyone to have fun and feel safe at the same time.

WE HOPE TO SEE YOU THERE!

SWA Workshop with



Laurin McCracken

There are only a couple of spots remaining for this 4-day workshop with Laurin McCracken.

If you're interested, you can sign up at our website.

www.swawatercolor.com

If you have any questions, please contact our workshop chair, Shirley Nichols at

senichols@flash.net

The workshop will be held at

St. John's Church
2401 College Ave.
Fort Worth, Tx.

April 19th - 22nd



WE NEED YOUR HELP!

Below are a few open positions we really need to fill.

If interested, please reach out to a current SWA Board member, or send an e-mail to watercolorcommunications@gmail.com



Exhibition Chair
Newsletter Editor
Membership Chair
Publicity Coordinator
Programs/Assistant to Demo Artist

Prize Sponsorship Coordinator
Social Chairman
Painting Hanging Volunteers
Hospitality
Greeters

SWA OPERATES COMPLETELY ON VOLUNTEERS



Painting OF THE MONTH



Don't forget to bring a painting to the next meeting to enter the **2022 Painting of the Month** contest.

Paintings that win 1st Place in the monthly contests throughout this year become eligible for the year ending Painting of the Year contest.

Next Meeting:

Monday, March 21st at 7pm

(Artwork Critique with Court Bailey at 6:30pm.)

UNT Health Science Center - Fort Worth, Tx.

February Winners!

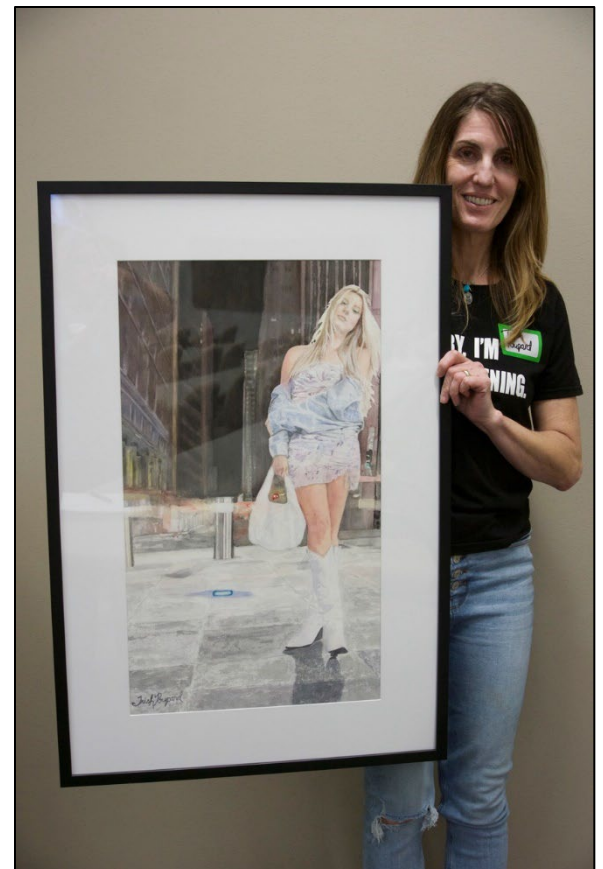


1st Place

Ann Patton

Cowbirds on A Cold Morning

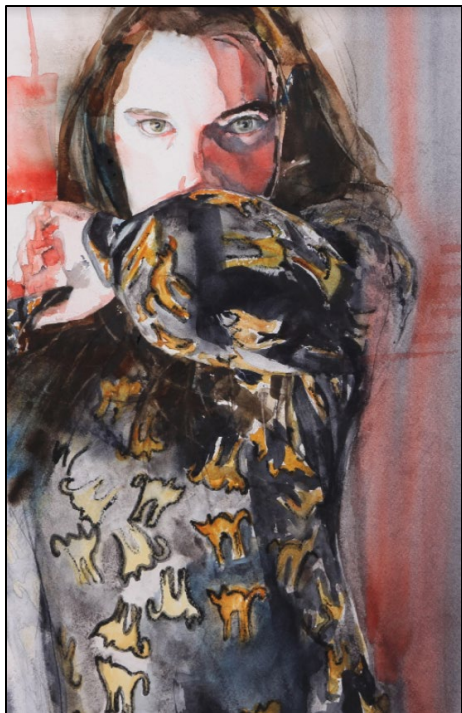
Congratulations!



2nd Place

Trish Poupard

Urban Cowgirl

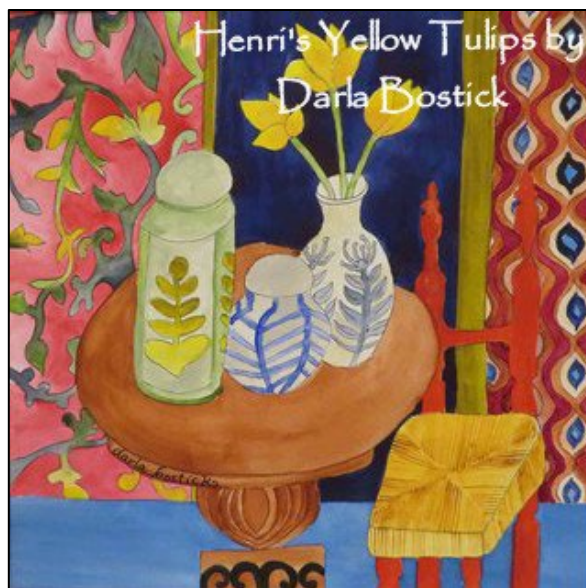


Rebecca Krutsinger's painting, *The Cat's Meow* (above), was accepted into the 22nd Georgia Watercolor Society 2022 Exhibition. And her painting *Hanging Out w/Friends and (Talking)* below, has been accepted into the Louisiana Watercolor Society's 52nd Annual International Exhibition.

Congratulations



Les McDonald Jr's painting *Shopping in San Jose* has been accepted into *Splash 23*. It is his third painting to be accepted into *Splash*.



**WE LOVE TO SHARE NEWS
OF YOUR ACCEPTANCE INTO SHOWS,
OR AWARDS WON!**

Please send us information you would like to share, and we'll get it in the next newsletter.

Darla Bostick's painting *Henri's Yellow Tulips* won 2nd place at the VAST 175-mile Juried Exhibition. She also has three paintings on display at the Lewisville Grand Performance Hall show, *Big Inspiration, Small Works*.

SWA MEMBER NEWS!



Trish Poupard's painting *First Bloom* (above), was juried into Spring into Art, A Fine Art Exhibition and Sale at The Huntington Library in San Marino, California.



Kay Smith's painting *At Dell's Cafe* (above) Has been accepted into the Louisiana Watercolor Society Exhibition. And its inclusion has earned her the LWS Signature Status.



Maria van Kijk's painting *The Flower Vendor* (above), has been accepted in the International Art Mart in Khajuraho India. And her painting, *Beauty of the Wild* (right), was selected to be in the International Watercolor Society of Izmir Turkey 10th Anniversary Exhibition.



Welcome

New Members

We like to welcome new members to our association, along with others that have been members in the past.

Kathleen Bishop – Bullard, Texas

Alonzo Clarke – Newmarket, New Hampshire

Christine Coombs – Hill, New Hampshire

Mari Beth Douglas – Fort Worth, Texas

Kirk Gonzales – Irving, Texas

Marilyn Ivy – Fort Worth, Texas

Mimi Karnes – Fort Worth, Texas

Pat Konicki – Taylors, South Carolina

Wendy Marshall – Womelsdorf, Pennsylvania

George Morley – Bedford, Texas

Lucy Oppermann – Fort Worth, Texas

Irene Sheytman – Houston, Texas

Sandy Stickane – Trophy Club, Texas

John Walker – New Freedom, Pennsylvania

Burl Washington – Fort Worth, Texas

Lori Williamson – Prosper, Texas

SOCIETY OF WATERCOLOR ARTISTS

Mary Lou Osborne

SWA President 2001

We were recently made aware that Mary Lou Osborne passed away late last year. Mary Lou was President of SWA in 2001.

Mary Lou Osborne, age 92, passed away peacefully at her home on November 14, 2021. Mary Lou began painting after her retirement. She was a talented experimental abstract artist working in mixed media on paper, canvas, and silk. She was a long-time member of several artist organizations, including the Society of Watercolor Artists (2001-2016, President, Signature Member); the Trinity Arts Guild (2002-2016); the International Society of Experimental Artists (2004-2010, Signature Member); the National League of American Pen Women (2007-2019, President); the Renegade Artists (2003-2015); and the Women of Worth Shows (2009-2018). Mary Lou participated in numerous art exhibitions and won many awards. Notably, one of her most awarded paintings, Balloon Sail, was included in Journeys to Abstraction, 100 Contemporary Paintings by Sue St. John.



With Heartfelt
Sympathy



The husband of longtime SWA Member Elaine Jary,
Zdenek Josef “Z” Jary passed away.

We want to share our heartfelt wishes of sympathy to Elaine,
and to the rest of her family.

ONGOING SWA FUNDRAISERS...



An easy way for you to help us out!

These companies support charitable organizations like SWA by donating a portion of their sales with you, directly to us.

We hope you'll consider choosing SWA when shopping with these companies.



AmazonSmile is a simple way for you to support your favorite charitable organization every time you shop, at no cost to you. AmazonSmile is available at smile.amazon.com on your web browser and can be activated in the Amazon Shopping app for iOS and Android phones. When you shop with AmazonSmile, you'll find the exact same low prices, vast selection and convenient shopping experience as Amazon.com, with the added benefit that AmazonSmile will donate 0.5% of your eligible purchases to the Society of Watercolor Artists. Once you set our organization of choice as SWA, every time you shop from Amazon Smile, you're helping us!



Kroger makes quarterly donations to SWA through your shopping! Go to www.krogercommunityrewards.com . If you already have a Kroger's Plus card, create your account and input your card number. In 7 to 10 days after shopping you will notice at the bottom of your receipt a donation was recorded for SWA.

COLORS OF NATURE

Colors of Nature offers SWA members a 20% discount on their watercolors and customized brushes that are 100% vegan and cruelty-free. The savings are matched and donated back to SWA. The company will post member's artwork created with their paints on their website, blog and direct people to a site of the artist's choice. SWA discount code: Members-20-SWA <http://shop.colorsofnature.com>

If you are aware of any other companies that donate to organizations like ours, please feel free to send us a note, and we'll add them to the list. Thanks!



SWA

P.O. Box 471571
Fort Worth, Texas
76147

www.swawatercolor.com

BOARD OF DIRECTORS

PRESIDENT

Iok Hou Pang

PAST PRESIDENT

Darla Bostick

SECRETARY

Vicki Rowley

TREASURER

Janet Southern

EDUCATION/WORKSHOP

Shirley Nichols

COMMUNICATIONS

Skeeter Murley

MEMBERSHIP

Skeeter Murley

Exhibition Chair

Vacant

2022

2022 CALENDAR

Our meetings are held at the UNT Health Science Center
3500 Camp Bowie Blvd. in Fort Worth, Tx.

January 24 – Laurin McCracken - Marketing your Art on Social Media

February 21 – Michael Holter - Demo Artist

March 21 – Ann Winchester & Bill Dale – Demo Artists

April 18 – Laurin McCracken – Demo

April 19 – 22 – Laurin McCracken Workshop

May 16 – Hollan Holmes – Demo Artist

July 18-21 – Stephen Zang Workshop – Portraits that Captures

September 19 – Daniel Smith Art Material Demo

October 17 – Cecy Turner – Demo Artist

October 18 & 19 - Cecy Turner Workshop

November 21 – Tina Bohlman - Demo Artist

Masks are not required to attend the meetings.
There is a lot of room inside the room for social distancing.
We really do want everyone to have fun & feel safe.

**Your SWA Board Members continues to
hold regular monthly meetings via Zoom .**

If you have any questions or suggestions,
please send them to Iok-Hou Pang at
ipang@sbcglobal.net



If you have any news you would like
to share in future e-mails, please feel
free to send it our way. We've set
up a new e-mail address for you to
send all of your newsletter info to.

swa.membernews@gmail.com

SWA INFORMATION STATION

SWA memberships runs on a calendar year January through December

You may join SWA anytime during the year. Our official membership campaign begins in October as our regular year runs with the calendar: January through December. Those who join mid-year do not receive a discounted membership fee, but they are eligible for the membership juried show in the fall, which is for current members only. We will not be meeting during the summer months and will resume in September.

We like new members...invite your friends!



SWA Membership includes these benefits:

- ✚ Fellowship with like-minded creative folks
- ✚ Free monthly SWA newsletter
- ✚ Entry discount for any SWA show
- ✚ Free image on the SWA Members Gallery
- ✚ Annual Juried Membership Exhibition
- ✚ Annual Juried International Exhibition
- ✚ ASEL Art of the Month Contest
- ✚ While maintaining SWA membership earn SWA Signature Membership after selection to 5 juried exhibitions our juried exhibitions (without disqualification)
- ✚ Asel Art Supply 20% discount
- ✚ Fun Competitions!
- ✚ December Holiday Party and Gift Exchange

Our Monthly meetings are held at the UNT Health Science Center building in Fort Worth. After you turn from Camp Bowie to Clinton St turn left into a sloping parking lot beyond the vacant kiosk. We are on the bottom floor of the building to the right corner. Watch for a sign on the parking lot with directions to our room (or check the map on the website)

6:00pm Artwork Critique (bring in 1 or 2 works for some friendly advice) Ann Winchester – Artwork Critique Artist

7:00pm Member meeting begins after a few brief business notices

EDUCATION COMMITTEE

CHAIR: Shirley Nichols

ASEL Painting of the Month/Year: **AVAILABLE**

Monthly Critique: Ann Winchester / Court Bailey

Programs: Shirley Nichols

Programs/Assistant to Demo Artist: **AVAILABLE**

Social Chairman (Refreshments/Receptions): **AVAILABLE**

Workshop Chair: Shirley Nichols

EXHIBITION COMMITTEE

CHAIR: **AVAILABLE**

Hanging Volunteers: **AVAILABLE**

SWA Signatures: Veronica Ritchey

Prize Sponsors: **AVAILABLE**

MEETING VOLUNTEERS (Not a committee)

Hospitality: **AVAILABLE**

PUBLICITY & COMMUNICATION COMMITTEE

CHAIR: Skeeter Murley

Newsletter Editor: **AVAILABLE**

Photography: Veronica Ritchey

Print Editor for Catalogs: Skeeter Murley

Publicity: **AVAILABLE**

Website Manager: Skeeter Murley

Facebook, Instagram & Twitter: Skeeter Murley

FINANCE AND MARKETING COMMITTEE

CHAIR and Director of Finance & Budget: Janet Southern

Professional Standards (yearly audit): **AVAILABLE**

MEMBERSHIP COMMITTEE

CHAIR and Director of Membership: Skeeter Murley

Greeters: **AVAILABLE**

Editor of Online Membership Directory: Skeeter Murley

House & Properties: Shirley Nichols